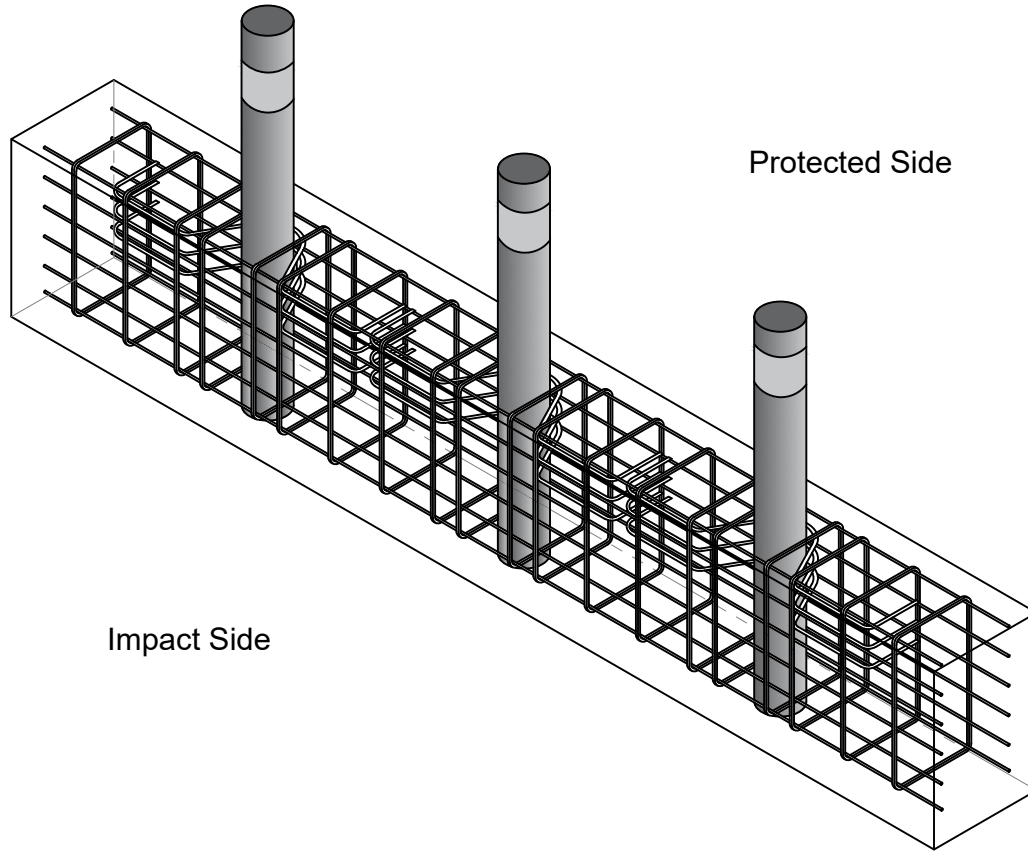



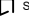
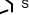
1-800-BOLLARDS

The Bollard Experts

REVISIONS			
LTR	DESCRIPTION	DATE	APPVD
COMMENTS			
SPECIFICATIONS			
HEIGHT: 42"			
DIAMETER: 8.65"			
WALL THICKNESS: 0.500"			



- 8" M30 HIGH SECURITY DEEP MOUNT
- FDMCS8080 (FIXED)
 - SELECT DESIRED STAINLESS STEEL BOLLARD FINISH:
 - POLISHED #4 FINISH
 - AS SPECIFIED _____
 - SELECT DESIRED CARBON STEEL BOLLARD FINISH:
 - POWDERCOAL RAL # _____
 - AS SPECIFIED _____
 - SELECT DESIRED STAINLESS STEEL BOLLARD MATERIAL:
 - TYPE 304
 - TYPE 316

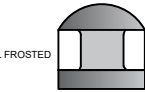
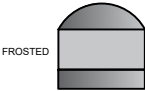
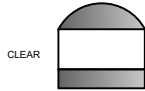
- SELECT DESIRED BOLLARD CAP STYLE:
-  DOME
 -  STANDARD FLAT
 -  SLOPED

- LENS SELECTION
- CLEAR
 - FROSTED
 - INTERNAL FROSTED
 - PARACLINE SILVER
 - PARACLINE WHITE
 - LOUVER GREY
 - LOUVER WHITE

- WATTAGE
- 5W 16LEDS 100mA
 - 8W 16LEDS 175mA
 - 12W 16LEDS 250mA

- CCT
- COOL
 - NEUTRAL
 - WARM

- VOLTAGE
- 120-277VAC
 - 120V



DOME STANDARD FLAT SLOPED



APPLICATION	
NEXT ASSY	USED ON

SERIES NUMBER: XX-S060-XX	CAGE CODE: 6NGJ8	REV: 	DRAWING NUMBER: M30 DEEP MOUNT
PRODUCT FAMILY: M30 DEEP MOUNT	PRODUCT CLASS: STANDARD OR CUSTOMER DEFINED	DRAWN BY: AJA	DRAWING REV:
PRODUCT LINE: BOLLARD	PRODUCT SUB LINE: DEEP MOUNT	CHECKED BY: 	SHEET: 1 OF 1
1-800-BOLLARDS, Inc. 10 Hughes Suite A105 Irvine, CA 92618 PHONE: 1-800-BOLLARDS WEB: WWW.1800BOLLARDS.COM EMAIL: INFO@1800BOLLARDS.COM		APPROVED BY: 	RELEASE DATE:
TITLE: BOLLARD, M30 DEEP MOUNT			

1. THIS DRAWING IS TO BE COMPLETED IN ACCORDANCE WITH MANUFACTURER'S SPECIFICATIONS.
 2. DO NOT SCALE DRAWINGS.
 3. ALL DIMENSIONS ARE UNLESS OTHERWISE SPECIFIED.
 4. ALL INFORMATION CONTAINED HEREIN WAS CURRENT AT THE TIME OF DEVELOPMENT BUT MUST BE REVIEWED AND APPROVED BY THE PRODUCT MANUFACTURER TO BE CONSIDERED ACCURATE.

1-800-BOLLARDS


The Bollard Experts

REVISIONS			
LTR	DESCRIPTION	DATE	APPVD


COMMENTS			

SPECIFICATIONS			
HEIGHT:	42"		
DIAMETER:	8.625"		
WALL THICKNESS:	0.500"		

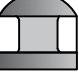
- 8" M30 HIGH SECURITY DEEP MOUNT**
- FDMCS8080 (FIXED)
- SELECT DESIRED STAINLESS STEEL BOLLARD FINISH:
 POLISHED #4 FINISH
 AS SPECIFIED _____
- SELECT DESIRED CARBON STEEL BOLLARD FINISH:
 POWDERCOAL RAL # _____
 AS SPECIFIED _____
- SELECT DESIRED STAINLESS STEEL BOLLARD MATERIAL:
 TYPE 304
 TYPE 316
- SELECT DESIRED BOLLARD CAP STYLE:
 DOME
 STANDARD FLAT
 SLOPED
- LENS SELECTION
- CLEAR
- CLEAR
 FROSTED
 INTERNAL FROSTED
 PARALINE SILVER
 PARALINE WHITE
 LOUVER GREY
 LOUVER WHITE
- WATTAGE
- 5W 16LEDS 100mA
 8W 16LEDS 175mA
 12W 16LEDS 250mA
- CCT
- COOL
 NEUTRAL
 WARM
- VOLTAGE
- 120-277VAC
 120V
- CLEAR




FROSTED




INTERNAL FROSTED

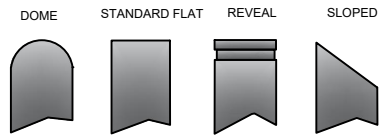
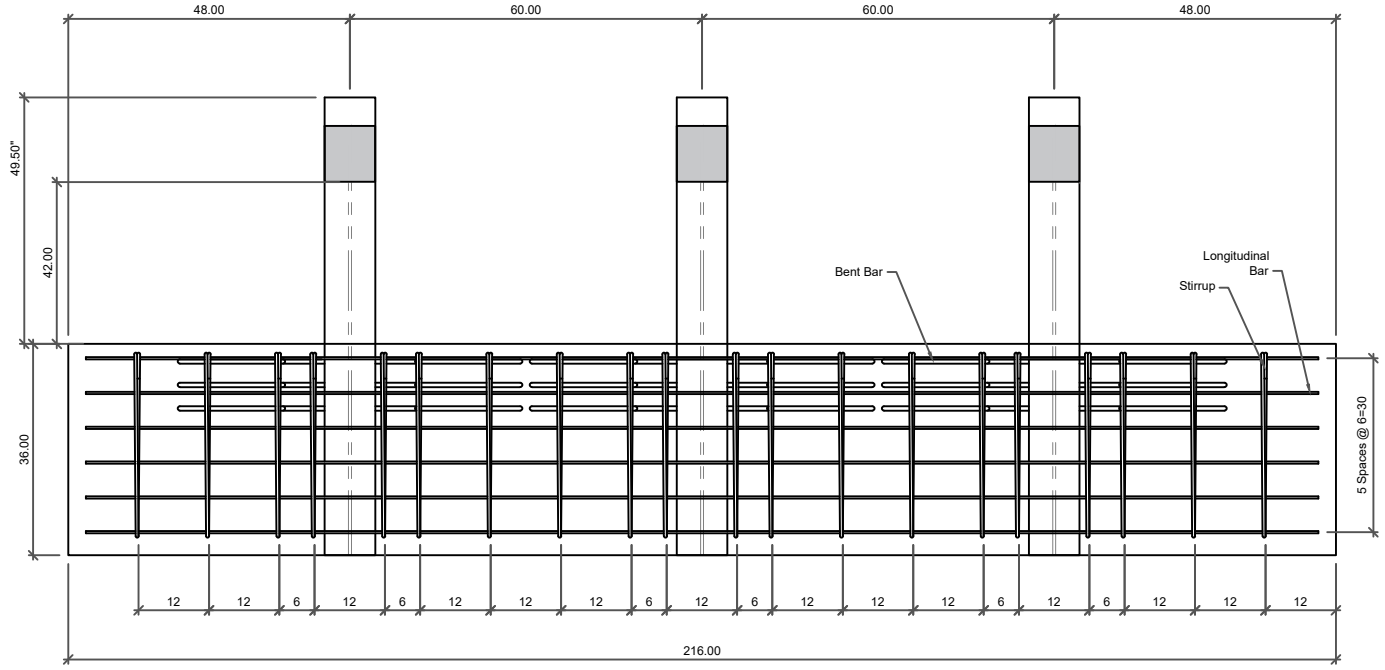


PARALINE



LOUVER





NOTES:

1. INSTALLATION TO BE COMPLETED IN ACCORDANCE WITH MANUFACTURER'S SPECIFICATIONS.
2. DO NOT SCALE DRAWING.
3. THIS DRAWING IS INTENDED FOR USE BY ARCHITECTS, ENGINEERS, CONTRACTORS, CONSULTANTS AND DESIGN PROFESSIONALS FOR PLANNING PURPOSES ONLY. THIS DRAWING AND ALL INFORMATION CONTAINED HEREIN WAS CURRENT AT THE TIME OF DEVELOPMENT BUT MUST BE REVIEWED AND APPROVED BY THE PRODUCT MANUFACTURER TO BE CONSIDERED ACCURATE.
4. ALL INFORMATION CONTAINED HEREIN WAS CURRENT AT THE TIME OF DEVELOPMENT BUT MUST BE REVIEWED AND APPROVED BY THE PRODUCT MANUFACTURER TO BE CONSIDERED ACCURATE.

APPLICATION		TITLE	
NEXT ASSY	USED ON		
		BOLLARD, CT FIXED	

SERIES NUMBER: XX-S060-XX	CAGE CODE: 6N6JB	REV: 8"	DRAWING NUMBER: 8" CT FIXED
PRODUCT FAMILY: 30 MPH CRASH TESTED	DRAWN BY: A.JA	DRAWING REV:	
PRODUCT CLASS: STANDARD OR CUSTOMER DEFINED	CHECKED BY:	SHEET: 1 OF 1	
PRODUCT LINE: BOLLARD	APPROVED BY:	RELEASE DATE:	
PRODUCT SUB LINE: FIXED			

1-800-BOLLARDS, Inc.
 10 Hughes Suite 4105
 Irvine, CA 92618
 PHONE: 1-800-BOLLARDS
 WEB: WWW.1800BOLLARDS.COM
 EMAIL: INFO@1800BOLLARDS.COM